

\$6,254,500 - 6100 Ocean Hwy East, Winnabow

MLS® #20687809

\$6,254,500

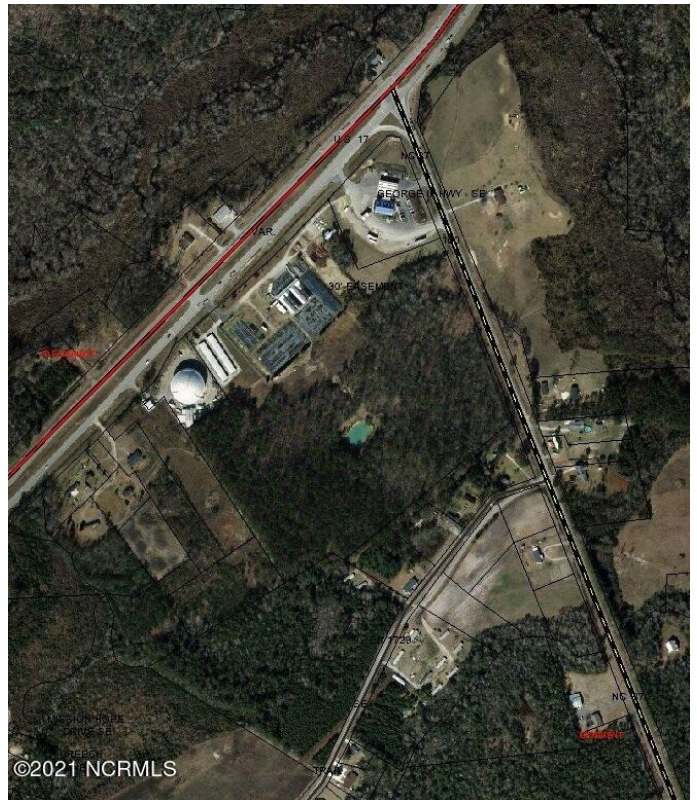
Bedroom, Bathroom, 1,556,834 sqft
Land/Acreage/Site on 35.74 Acres

Other, Winnabow, NC

35.74 Acres on US Hwy. 17 - Zoned CLD - High traffic. With 775+/- feet on US 17 and 956 +/-NC 87 it makes frontage available for Commercial Out Parcels On This Property with possible Multi-Family Units on the back acreage. Three wells on property. This property is located about 1-4 miles south of where the I-40 corridor around Wilmington enters into hwy. 17S toward Myrtle Beach. It is at the intersection of US17S and NC 87S. Great location for retail, shopping center, restaurants, At present there is an existing Exxon Station and Subway. 15 miles south of Wilmington and only 8 miles south of Brunswick Forest(a new residential and shopping community). Not far from area beaches/Bald Head island.* NOTE: The 1732' road frontage is Total road frontage. US 17 = 776' frontage, NC 87S = 956' road frontage. * See attached documents.bash N.C. and north Myrtle Beach, S.C.

Essential Information

MLS® #	20687809
Price	\$6,254,500
Square Footage	1,556,834
Acres	35.74
Type	Land/Acreage/Site
Sub-Type	Commercial/Industrial
Status	Active



Community Information

Address	6100 Ocean Hwy East
Area	Other
Subdivision	Other
City	Winnabow
County	Brunswick
State	NC
Zip Code	28479

Amenities

Amenities	No Amenities
-----------	--------------

Exterior

Lot Description	908X837X1006X906
-----------------	------------------

School Information

Elementary	Town Creek
Middle	S. Brunswick
High	South Brunswick

Additional Information

Date Listed	November 4th, 2014
Days on Market	3469
Zoning	CLD
Short Sale	Yes

Listing Details

Listing Office	Wana Batson Realty
----------------	--------------------

The data relating to real estate on this web site comes in part from the Internet Data Exchange program of North Carolina Regional MLS LLC, and is updated as of May 3rd, 2024 at 7:54am EDT. All information is deemed reliable but not guaranteed and should be independently verified. All properties are subject to prior sale, change, or withdrawal. Neither listing broker(s) nor Northrop Realty: A Long & Foster Company shall be responsible for any typographical errors, misinformation, or misprints, and shall be held totally harmless from any damages arising from reliance upon these data. © 2016 North Carolina Regional MLS LLC