

\$285,990 - 3850 Lady Bug Dr 210- Kerry A, Shallotte

MLS® #100440560

\$285,990

3 Bedroom, 2.00 Bathroom, 1,475 sqft

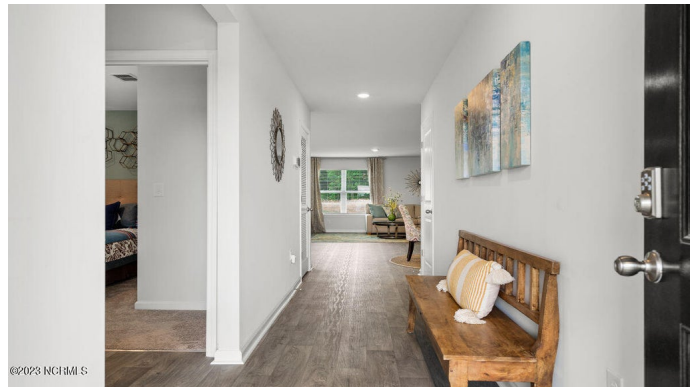
Single Family on 0.16 Acres

The Meadows @ Wildwood Village, Shallotte, NC

Welcome to The Meadows Of Wildwood Village, offering new homes with thoughtful details and smart designs plus a convenient location. This Kerry has it all! Open concept home with a modern design including 36" cabinetry, stainless Whirlpool appliances and lots of windows allowing natural light to flow in. The living and dining rooms are adjacent to the kitchen along with a rear covered porch just off the dining room which makes entertaining effortless! Come see all the insightful features designed with you and your lifestyle in mind including a split bedroom layout, beautiful and durable vinyl flooring throughout the main living areas and our industry leading smart home technology package that will allow you to monitor and control your home from the couch or across the globe.*Photos are of a similar Kerry home. (Home and community information, including pricing, included features, terms, availability and amenities, are subject to change prior to sale at any time without notice or obligation. Square footages are approximate. Pictures, photographs, colors, features, and sizes are for illustration purposes only and will vary from the homes as built. Equal housing opportunity builder.)

Built in 2024

Essential Information



MLS® #	100440560
Price	\$285,990
Bedrooms	3
Bathrooms	2.00
Full Baths	2
Square Footage	1,475
Acres	0.16
Year Built	2024
Type	Single Family
Sub-Type	Stick-Built
Status	Active

Community Information

Address	3850 Lady Bug Dr 210- Kerry A
Area	The Meadows @ Wildwood Village
Subdivision	The Meadows @ Wildwood Village
City	Shallotte
County	Brunswick
State	NC
Zip Code	28470

Amenities

Amenities	Trash Removal
Utilities	Municipal Sewer, Municipal Water
Parking	Attached, Garage Door Opener
# of Garages	2

Interior

Interior Features	1st Floor Master, Foyer, Smoke Detectors, Walk-in Shower, Walk-In Closet
Appliances	Dishwasher, Microwave - Built-In, Stove/Oven - Electric
Heating	Heat Pump
Cooling	Central Forced Air, Heat Pump
# of Stories	1
Stories	1 Story

Exterior

Exterior	Vinyl
Lot Description	56x120x56x120

Roof	Architectural Shingle
Construction	Wood Frame
Foundation	Slab

School Information

Elementary	Union
Middle	Shallotte
High	W. Brunswick

Additional Information

Date Listed	April 24th, 2024
Days on Market	25
Zoning	res

Listing Details

Listing Office	D R Horton, Inc.
----------------	------------------

The data relating to real estate on this web site comes in part from the Internet Data Exchange program of North Carolina Regional MLS LLC, and is updated as of May 18th, 2024 at 10:55am EDT. All information is deemed reliable but not guaranteed and should be independently verified. All properties are subject to prior sale, change, or withdrawal. Neither listing broker(s) nor Northrop Realty: A Long & Foster Company shall be responsible for any typographical errors, misinformation, or misprints, and shall be held totally harmless from any damages arising from reliance upon these data. © 2016 North Carolina Regional MLS LLC