

# \$664,900 - 1028 Mayfair Way, Sunset Beach

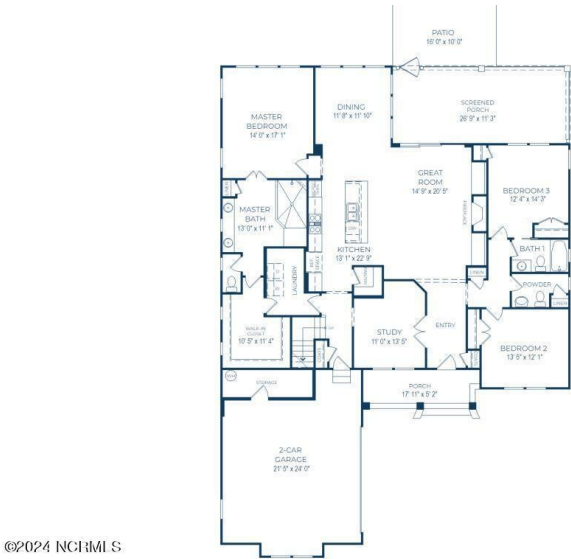
MLS® #100439305

## \$664,900

3 Bedroom, 4.00 Bathroom, 2,756 sqft  
Single Family on 0.28 Acres

Ocean Ridge Plantation, Sunset Beach, NC

Discover the charm of the Anchor, a 3-bed, 3.5-bath coastal home with a warm Southern welcome. The spacious master suite ensures convenience and privacy. A generous kitchen with a walk-in pantry, a study off the foyer, and an upstairs bonus room and a full bathroom add to the appeal. Enjoy NC outdoor living by relaxing on the oversized screen porch. Meticulous attention to detail makes the Anchor an exceptional and sought-after residence.



©2024 NCBMLS

Built in 2024

## Essential Information

MLS® #	100439305
Price	\$664,900
Bedrooms	3
Bathrooms	4.00
Full Baths	3
Half Baths	1
Square Footage	2,756
Acres	0.28
Year Built	2024
Type	Single Family
Sub-Type	Stick-Built
Status	Active

## Community Information

Address	1028 Mayfair Way
Area	Ocean Ridge Plantation

Subdivision	Ocean Ridge Plantation
City	Sunset Beach
County	Brunswick
State	NC
Zip Code	28468

### **Amenities**

Amenities	Beach Access, Clubhouse, Comm Garden, Pool - Outdoor, Exercise Course, Fitness Center, Golf Course, Pool - Indoor, Jogging Path, Maint - Comm Areas, Maint - Roads, Mgmt Fee, Master Insure, Meeting Room, Pickleball, Picnic Grounds, Restaurant, Street Lights, Tennis
Utilities	Municipal Sewer Available, Municipal Water Available
Parking	Concrete, Garage Door Opener, Garage Faces Side
# of Garages	2
Pool	None

### **Interior**

Interior Features	1st Floor Master, 9Ft+ Ceilings, Bookcases, Ceiling - Trey, Ceiling - Vaulted, Ceiling Fans, Kitchen Island, Pantry, Smoke Detectors, Walk-in Shower, Walk-In Closet
Appliances	Cooktop - Electric, Dishwasher, Disposal, Microwave - Built-In, Vent Hood, Wall Oven
Heating	Heat Pump, Zoned
Cooling	Heat Pump, Zoned
Fireplace	Yes
# of Fireplaces	1
# of Stories	2
Stories	1 1/2 Story

### **Exterior**

Exterior	Brick, Fiber Cement Board, Stone, Stone Veneer
Exterior Features	Landscape Sprkr Sys
Lot Description	91 x 150
Roof	Architectural Shingle, Metal/Tin
Construction	Brick/Stone, Wood Frame
Foundation	Raised Slab, Slab

### **School Information**

Elementary	Jessie Mae Monroe El
Middle	Shallotte

High W. Brunswick

### **Additional Information**

Date Listed April 17th, 2024

Days on Market 32

Zoning MR3

### **Listing Details**

Listing Office Coldwell Banker Sea Coast Advantage

The data relating to real estate on this web site comes in part from the Internet Data Exchange program of North Carolina Regional MLS LLC, and is updated as of May 18th, 2024 at 9:54am EDT. All information is deemed reliable but not guaranteed and should be independently verified. All properties are subject to prior sale, change, or withdrawal. Neither listing broker(s) nor Northrop Realty: A Long & Foster Company shall be responsible for any typographical errors, misinformation, or misprints, and shall be held totally harmless from any damages arising from reliance upon these data. © 2016 North Carolina Regional MLS LLC