

\$474,999 - 701 Chestoa Trl, Aberdeen

MLS® #100433383

\$474,999

4 Bedroom, 4.00 Bathroom, 2,415 sqft

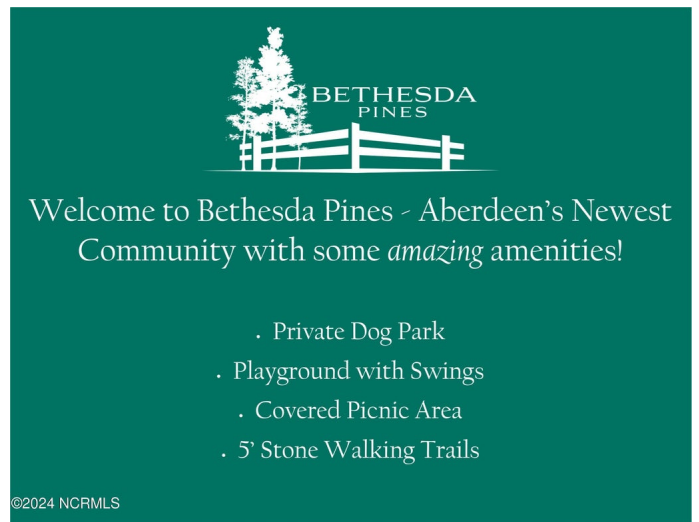
Single Family on 0.24 Acres

Bethesda Pines, Aberdeen, NC

Welcome to The Willow in Bethesda Pines - a community that will provide a private dog park, playground, covered picnic area and 5' stone walking trails! 4 Bedroom, 3.5 Bathroom/2415 SF Home! 3 Car Garage!! Estimated Completion date of 10/1/2024! Features that make this home stand out include painted and trimmed garage interiors, beautiful Luxury Vinyl Plank flooring in the main living areas, Natural Gas Logs Fireplace, Oak Stair Treads, Upgraded Raised Height Bathroom Vanities with Granite tops, Upgraded Framed Bathroom Mirrors in Owners Suite, and Tankless Natural Gas Water Heaters and Gas Range! Covered Front Porch leads into foyer with Formal Dining Room + Coffered Ceilings to your left. Connected to the Kitchen that offers a large center island, granite counters, corner walk-in pantry and breakfast bar that connects to Great Room! Great Room with Gas logs fireplace and access to back covered deck! 1st floor Owners Suite with vaulted ceiling, huge walk-in closet, walk-in shower, linen closet, plus direct access to laundry from WIC! Upstairs you'll find 3 large bedrooms! Bedroom 2 with it's own private ensuite bathroom! Bedroom 3 with a massive WIC! 2nd full bathroom and a huge loft space complete the 2nd floor.

Built in 2024

Essential Information



Rendering Photo of The Willow Floor Plan

MLS® #	100433383
Price	\$474,999
Bedrooms	4
Bathrooms	4.00
Full Baths	3
Half Baths	1
Square Footage	2,415
Acres	0.24
Year Built	2024
Type	Single Family
Sub-Type	Stick-Built
Status	Active

Community Information

Address	701 Chestoa Trl
Area	Bethesda Pines
Subdivision	Bethesda Pines
City	Aberdeen
County	Moore
State	NC
Zip Code	28315

Amenities

Amenities	Dog Park, Jogging Path, Maint - Comm Areas, Mgmt Fee, Master Insure, Picnic Grounds, Playground, Sidewalk, Trails
Utilities	Municipal Sewer, Municipal Water
Parking	Garage Door Opener, Garage Faces Front, Paved
# of Garages	3

Interior

Interior Features	1st Floor Master, 9Ft+ Ceilings, Ceiling Fans, Foyer, Gas Logs, Kitchen Island, Mud Room, Pantry, Walk-in Shower, Walk-In Closet
Appliances	Dishwasher, Microwave - Built-In, Range
Heating	Heat Pump
Cooling	Central Forced Air
Fireplace	Yes
# of Fireplaces	1
# of Stories	2
Stories	2 Story

Exterior

Exterior	Vinyl
Lot Description	63x35x28x72x73x125
Roof	Architectural Shingle
Construction	Wood Frame
Foundation	Slab

School Information

District	Moore County Schools
Elementary	Aberdeen
Middle	Southern Middle
High	Pinecrest High

Additional Information

Date Listed	March 18th, 2024
Days on Market	53
Zoning	ABERDE

Listing Details

Listing Office	Everything Pines Partners LLC
----------------	-------------------------------

The data relating to real estate on this web site comes in part from the Internet Data Exchange program of North Carolina Regional MLS LLC, and is updated as of May 10th, 2024 at 4:54am EDT. All information is deemed reliable but not guaranteed and should be independently verified. All properties are subject to prior sale, change, or withdrawal. Neither listing broker(s) nor Northrop Realty: A Long & Foster Company shall be responsible for any typographical errors, misinformation, or misprints, and shall be held totally harmless from any damages arising from reliance upon these data. © 2016 North Carolina Regional MLS LLC