

\$468,998 - 169 Rough Ridge Trl, Aberdeen

MLS® #100431713

\$468,998

3 Bedroom, 3.00 Bathroom, 2,495 sqft
Single Family on 0.21 Acres

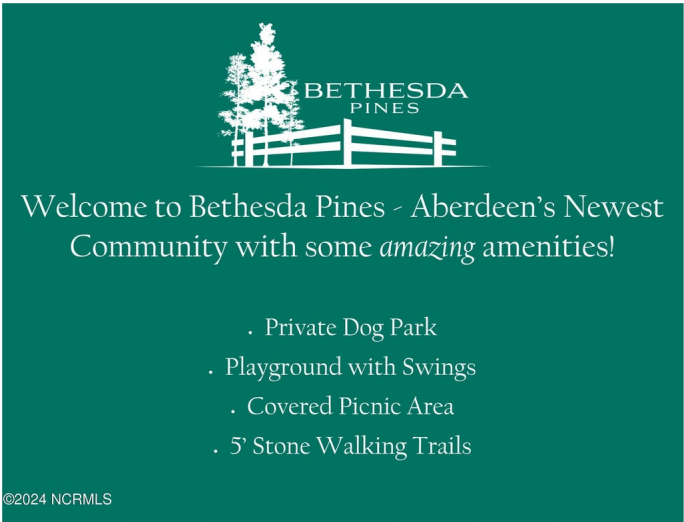
Bethesda Pines, Aberdeen, NC

Welcome to The Poppy in Bethesda Pines - a community that will provide a private dog park, playground, covered picnic area and 5' stone walking trails! Estimated Completion Date is 8/15/2024! Features that make this home stand out include painted and trimmed garage interiors, beautiful Luxury Vinyl Plank flooring in the main living areas, Natural Gas Logs Fireplace, Oak Stair Treads, Upgraded Raised Height Bathroom Vanities with Granite tops, Upgraded Framed Bathroom Mirrors in Owners Suite, and Tankless Natural Gas Water Heaters and Gas Range! Covered Front Porch leads you into the foyer with Formal Dining Room to your side. Kitchen with granite counters, large center island, corner walk-in pantry, and breakfast nook with access to covered patio. Great Room with gas logs fireplace! All bedrooms upstairs. Owners Suite is so spacious with a large sitting area off from the bedroom. Ensuite with double sink vanity, walk-in shower and walk-in closet. 2 other large bedrooms with walk-in closets. Spacious dedicated laundry room and a huge unfinished bonus room complete the second floor!

Built in 2024

Essential Information

MLS® #	100431713
Price	\$468,998
Bedrooms	3



Bathrooms	3.00
Full Baths	2
Half Baths	1
Square Footage	2,495
Acres	0.21
Year Built	2024
Type	Single Family
Sub-Type	Stick-Built
Status	Active

Community Information

Address	169 Rough Ridge Trl
Area	Bethesda Pines
Subdivision	Bethesda Pines
City	Aberdeen
County	Moore
State	NC
Zip Code	28315

Amenities

Amenities	Dog Park, Jogging Path, Maint - Comm Areas, Mgmt Fee, Master Insure, Picnic Grounds, Playground, Sidewalk, Trails
Utilities	Municipal Sewer, Municipal Water
Parking	Garage Door Opener, Paved
# of Garages	2

Interior

Interior Features	9Ft+ Ceilings, Ceiling Fans, Foyer, Gas Logs, Kitchen Island, Pantry, Smoke Detectors, Walk-in Shower, Walk-In Closet
Appliances	Dishwasher, Microwave - Built-In, Range
Heating	Heat Pump
Cooling	Central Forced Air
Fireplace	Yes
# of Fireplaces	1
# of Stories	2
Stories	2 Story

Exterior

Exterior	Vinyl
----------	-------

Lot Description	51x131x69x97x29
Roof	Architectural Shingle
Construction	Wood Frame
Foundation	Slab

School Information

District	Moore County Schools
Elementary	Aberdeeen Elementary
Middle	Southern Middle
High	Pinecrest High

Additional Information

Date Listed	March 8th, 2024
Days on Market	66
Zoning	R-20

Listing Details

Listing Office	Everything Pines Partners LLC
----------------	-------------------------------

The data relating to real estate on this web site comes in part from the Internet Data Exchange program of North Carolina Regional MLS LLC, and is updated as of May 12th, 2024 at 8:54am EDT. All information is deemed reliable but not guaranteed and should be independently verified. All properties are subject to prior sale, change, or withdrawal. Neither listing broker(s) nor Northrop Realty: A Long & Foster Company shall be responsible for any typographical errors, misinformation, or misprints, and shall be held totally harmless from any damages arising from reliance upon these data. © 2016 North Carolina Regional MLS LLC