

# \$450,000 - Tbd Tbd Us Highway 15-501, Aberdeen

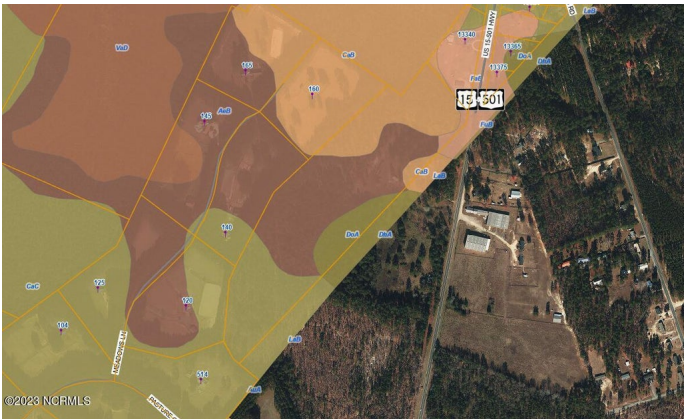
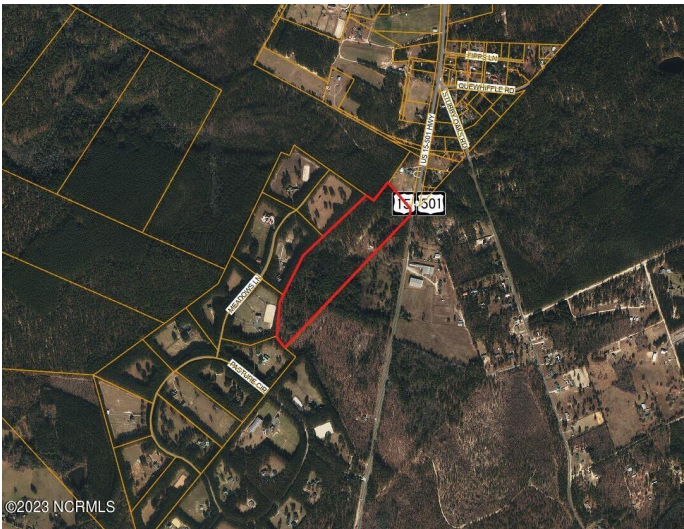
MLS® #100413201

## \$450,000

Bedroom, Bathroom, 1,310,285 sqft  
Land/Acreage/Site on 30.08 Acres

Not In Subdivision, Aberdeen, NC

30 acres available just 7 miles South of Aberdeen. Relatively flat, no wetlands, partially cleared. Great land to build the dream farm or a private estate tucked away back in the trees. Land is in Moore County and is approved for horses.



## Essential Information

MLS® #	100413201
Price	\$450,000
Square Footage	1,310,285
Acres	30.08
Type	Land/Acreage/Site
Sub-Type	Undeveloped
Status	Active

## Community Information

Address	Tbd Tbd Us Highway 15-501
Area	Not In Subdivision
Subdivision	Not In Subdivision
City	Aberdeen
County	Moore
State	NC
Zip Code	28315

## Amenities

Amenities	No Amenities
-----------	--------------

## School Information

District	Moore County Schools
Elementary	Aberdeeen Elementary
Middle	Southern Middle
High	Pinecrest High

### **Additional Information**

Date Listed	November 4th, 2023
Days on Market	194
Zoning	RA
Short Sale	Yes

### **Listing Details**

Listing Office	Carolina Summit Group, LLC
----------------	----------------------------

The data relating to real estate on this web site comes in part from the Internet Data Exchange program of North Carolina Regional MLS LLC, and is updated as of May 15th, 2024 at 3:55pm EDT. All information is deemed reliable but not guaranteed and should be independently verified. All properties are subject to prior sale, change, or withdrawal. Neither listing broker(s) nor Northrop Realty: A Long & Foster Company shall be responsible for any typographical errors, misinformation, or misprints, and shall be held totally harmless from any damages arising from reliance upon these data. © 2016 North Carolina Regional MLS LLC