

\$800,000 - 1709 North Poplar St, Aberdeen

MLS® #100389689

\$800,000

Bedroom, Bathroom, 57,935 sqft
Land/Acreage/Site on 1.33 Acres

Not In Subdivision, Aberdeen, NC

Excellent development opportunity located in the hub of retail; restaurant and service providers. One block off US Hwy 1 and 15-501 intersection with easy access. Behind Walgreens and KFC. Poplar Street is a connector alternative to US Hwy 1 and will encounter greater use as US Hwy and 15-501 transition to Super Streets.

Essential Information

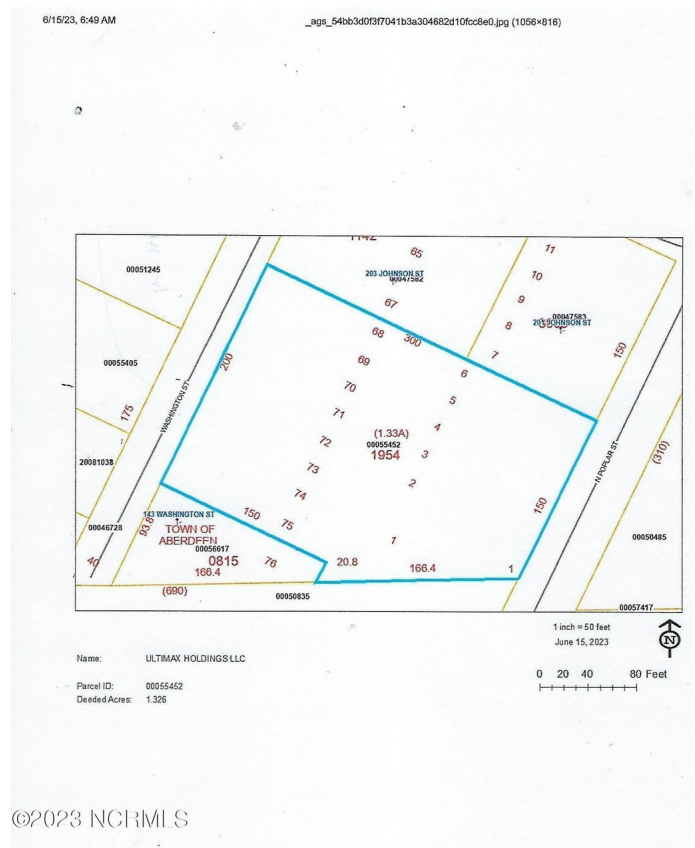
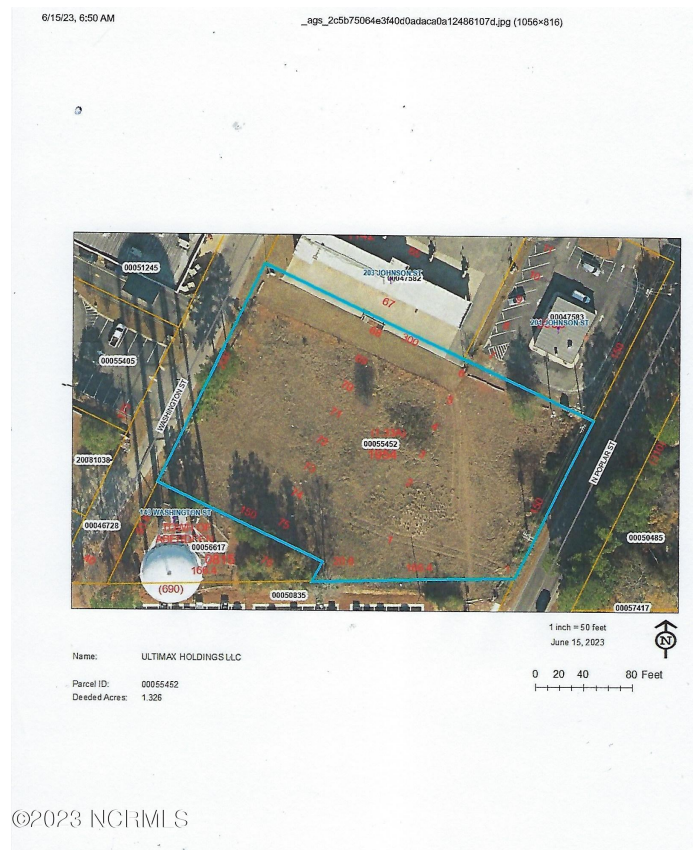
MLS® #	100389689
Price	\$800,000
Square Footage	57,935
Acres	1.33
Type	Land/Acreage/Site
Sub-Type	Commercial/Industrial
Status	Active

Community Information

Address	1709 North Poplar St
Area	Not In Subdivision
Subdivision	Not In Subdivision
City	Aberdeen
County	Moore
State	NC
Zip Code	28315

Amenities

Amenities	No Amenities
-----------	--------------



Utilities	Electricity Available, Municipal Sewer Avail, Municipal Water Avail
-----------	---

Exterior

Lot Description	150x166x20x150x200x300
-----------------	------------------------

School Information

District	Moore County Schools
Elementary	Aberdeen
Middle	Southern Middle
High	Pinecrest

Additional Information

Date Listed	June 15th, 2023
Days on Market	330
Zoning	GC
Short Sale	Yes

Listing Details

Listing Office	Keller Williams Pinehurst
----------------	---------------------------

The data relating to real estate on this web site comes in part from the Internet Data Exchange program of North Carolina Regional MLS LLC, and is updated as of May 9th, 2024 at 6:39am EDT. All information is deemed reliable but not guaranteed and should be independently verified. All properties are subject to prior sale, change, or withdrawal. Neither listing broker(s) nor Northrop Realty: A Long & Foster Company shall be responsible for any typographical errors, misinformation, or misprints, and shall be held totally harmless from any damages arising from reliance upon these data. © 2016 North Carolina Regional MLS LLC